

SUB & MARINE ENGINEERING & CONSTRUCTIONS

50<sup>years</sup>



CRAFTING STRATEGY SERVICES  
TO WORLDWIDE SUBMARINE  
CABLE INDUSTRY

IN HOUSE RESOURCES OF PEOPLE AND EQUIPMENT FOR

DATA COLLECTION

SHORE APPROACH STABILIZATION

CABLE LAY ASSISTANCE

CABLE PROTECTION, REPAIR AND ASSISTANCE

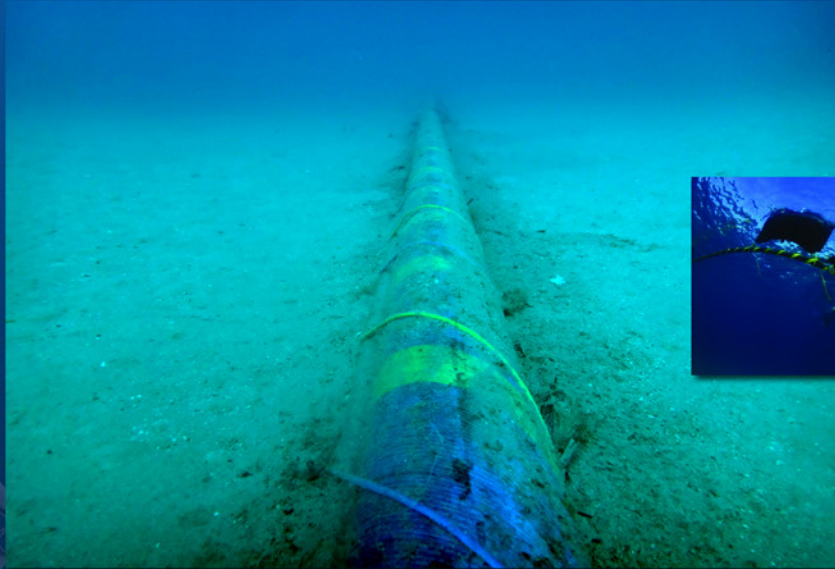
# OUR MISSION

TO BE A FIRST CHOICE SUPPLIER OF ADVANCED MANNED AND ROBOTIC TECHNOLOGY SYSTEMS TO THE SUB SEA CABLE INDUSTRY WORLDWIDE.

TECHNOLOGY AND CRAFT STRATEGY ARE OUR KEYS TO DELIVERING VALUE TO BOTH OURS CUSTOMERS AND TO OPEN NEW AVENUES FOR DEVOLPMENT.

AS WE ENDEAVOUR TO POSITION OUR COMPANY AT THE BEST LEVEL OF SERVICE PROVIDERS, WE WILL ULTIMATELY RESUME OUR SUCCESS BY OUR CLIEN'S SATISFACTION AND FIDELITATION.

MORE THAN 50TH YEARS IN THE MARKET GIVE EVIDENCE TO THE FACT



## OUR SERVICES

- ROUTE SURVEY
- CABLE INSTALLATION ASSISTANCE
- MICROTUNNELING
- MAINTENANCE AND REPAIR ASSISTANCE
- POST LAY INSPECTION
- PERMIT AND AUTHORIZATION
- CONFINED SPACE INTERVENTION
- WEAPON CLEARENCE
- CABLE STABILIZATION IN ENVIRONMENTAL SENSIBLE AREAS
- BURIAL TRENCHING IN ANY SOIL
- MANNED AND ROBOTIC INTERVENTION
- HOSTILE ENVIRONMENT INTERVENTION
- TRENCHLESS SHORE APPROACH
- CABLE LOCATION
- CABLE UNCONVENTIONAL PROTECTION

**SISGEN** srl. - ITALY - via F. Petrarca n°2 Como, CAP: 22100

Office: +39 031 268531, fax: +39 031 264292, Workshop +39 031 555365, e-mail: [sisgen@sis-gen.com](mailto:sisgen@sis-gen.com)



## SURVEY CAPABILITY

DATA COLLECTION

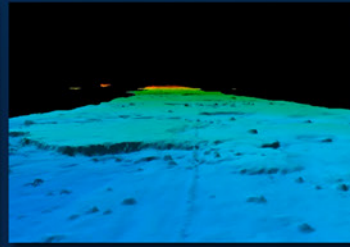
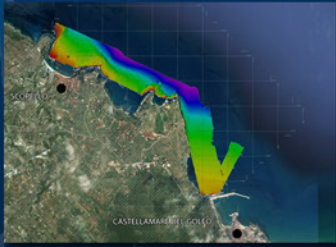
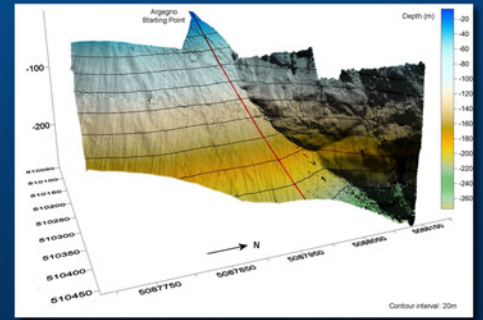
SITE CHARACTERIZATION

HYDROGRAPHIC MAPPING

R.O.V CABLE ROUTE SURVEY AND INSPECTION

GEOREFERENCED SHALLOW WATER VIDEO

POST LAY REPORTS



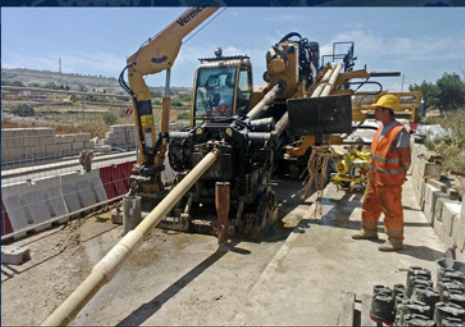
## SHORE APPROACH TECHNOLOGY

CONVENTIONAL TRENCHING

TUNNELING AND MICRO TUNNELING

HORIZONTAL DIRECTIONAL DRILLING

BIODEGRADABLE PRODUCT FOR ZERO ENVIRONMENT IMPACT





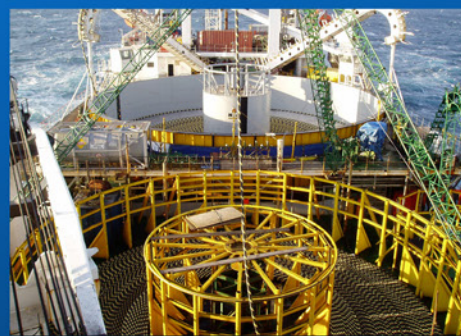
# CABLE LAY ASSISTANCE

PERMITS AND AUTHORIZATION

SHORE END INSTALLATION

MARINE AND U.W. SUPPORT

CONTROLLED PULLING OPERATION





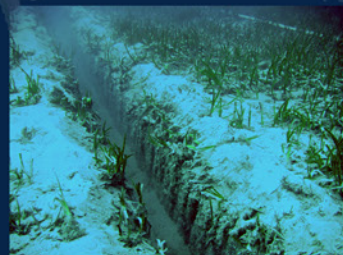
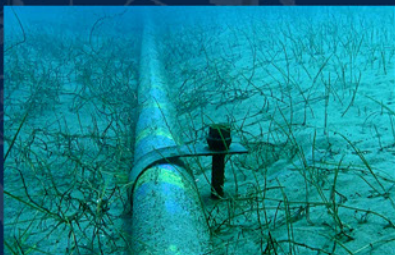
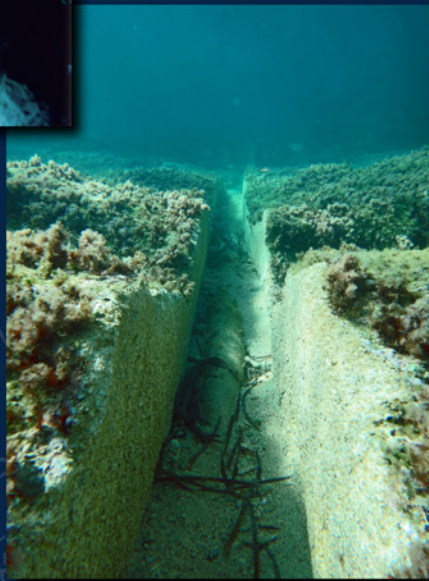
# CABLE STABILIZATION / PROTECTION

CABLE STABILIZATION IN ENVIRONMENTAL SENSIBLE AREAS

TRENCHING IN POSIDONIA AND CYMODOCEA AREAS WITH THE LOWEST ENVIRONMENT IMPACT

BURIAL TRENCHING IN ANY SOIL

CABLE UNCONVENTIONAL PROTECTION



**SISGEN** srl. - ITALY - via F. Petrarca n°2 Como, CAP: 22100

Office: +39 031 268531, fax: +39 031 264292, Workshop +39 031 555365, e-mail: [sisgen@sis-gen.com](mailto:sisgen@sis-gen.com)

New Zealand



# GREAT WORK TRACK RECORD

- 1999 ITALY LIBYA PROJECT: CABLES LAYING ASSISTANCE AND BURIAL PROTECTION WITH SUBMARINE APPARATUS (ITALIAN AND LIBYAN SEGMENT)
- 2000 IC1 ISRAEL PROJECT: F.O. CABLES OFFSHORE BURIAL PROTECTION WITH SF4 JETTING SYSTEM (ALONG ISRAELIAN COAST)
- 2000 ITALY GREECE PROJECT: INSHORE CABLES PROTECTIONS, ROCK TRENCHING WITH SUBMARINE APPARATUS AND OFFSHORE PROTECTIONS WITH MATTRESSES (ITALIAN SITE)
- 2000 LINOSA LAMPEDUSA AND OSTIA GOLFO ARANCI PROJECTS: CABLES LAYING ASSISTANCE BURIAL PROTECTIONS AND ROCK TRENCHING WITH SUBMARINE MANNED APPARATUS
- 2001 VENICE/MURANO/MESTRE PROJECT: HORIZONTAL DIRECTIONAL DRILLING AT SHORE APPROACHES AND CABLES LAYING ASSISTANCE
- 2001 ITALY GREECE PROJECT: OFFSHORE CABLES BURIAL PROTECTION AND INSPECTION – ROCK TRENCHING
- 2002 ALPAL 2 PROJECT: CABLES LAYING ASSISTANCE AND BURIAL PROTECTION WITH SUBMARINE APPARATUS BETWEEN PALMA AND ALGIERS
- 2002 PALMI/MORTELLE (SICILY-SOUTH OF ITALY) PROJECT: SHORE APPROACHES PREPARATION, CABLES LAYING ASSISTANCE AND INSHORE BURIAL PROTECTION WITH SUBMARINE APPARATUS AND OFFSHORE PROTECTION WITH SF4 JETTING SYSTEM
- 2002 CALASSETTA/CARLOFORTE (SARDINIA) PROJECT: SHORE APPROACHES PREPARATION, CABLES LAYING ASSISTANCE AND INSHORE BURIAL PROTECTION WITH SUBMARINE APPARATUS
- 2003 ARCO FELICE - NAPLES PROJECT: SUPPLY AND INSTALLATION OF A NEW MOORING FIELD
- 2004/2005 LANZAROTE AND FUERTEVENTURA PROJECT: POWER CABLE LAYING ASSISTANCE BURIAL PROTECTIONS AND 1.5KM ROCK TRENCHING IN BASALT WITH SUBMARINE MANNED APPARATUS
- 2005 ALBACOM PROJECT: ALBACOM SUBMARINE CABLE FAULT REPAIR PALMI APPROACH - VALTELLINA
- 2005 BASSLINK PROJECT: TASMANIA/AUSTRALIA LINK - CABLE LAYING ASSISTANCE – TASMANIA APPROACH
- 2005 SARDINIA/CORSICA LINK PROJECT: HORIZONTAL DIRECTIONAL DRILLING AT SHORE APPROACHES - SANTA TERESA DI GALLURA (SS) APPROACH
- 2006 BALLYCASTLE-RATHLIN PROJECT (NORTH OF IRELAND): CABLE LAYING AND PROTECTION WORKS WITH VENTURY SYSTEM AND ROCK TRENCHING WITH SUBMARINE MANNED APPARATUS
- 2007/2008 SAPEI PROJECT: CABLE LANDING AND CABLE FIXING WITH MANTA RAY AND ROCK BOLTS DYWIDAG - NETTUNO (LAZIO) AND PUNTA TRAMONTANA (SARDINIA) APPROACHES
- 2010 SAPEI PROJECT: CABLE LANDING AND CABLE FIXING WITH MANTA RAY AND ROCK BOLTS DYWIDAG - NETTUNO (LAZIO), PUNTA TRAMONTANA (SARDINIA) AND FIUME SANTO (SARDINIA) APPROACHES
- 2010 SAN FRANCISCO BAY
- 2010/2011 COMETA PROJECT: CABLE LAYING ASSISTANCE AND BURIAL PROTECTION WITH SF4. SANTA PONCA BAY TRENCHING WORKS IN PRESENCE OF POSIDONIA AND CABLE LANDING ASSISTANCE
- 2011/2012 MESSINA II PROJECT: CABLE LANDING ASSISTANCE AND PROTECTION – FAVAZZINA (CALABRIA) AND VILLAFRANCA TIRRENA (SICILIA) APPROACHES
- 2012 SAPEI PROJECT: CABLE MAINTENANCE. MINI-TRENCH IN POSIDONIA AND ROCK WITH LOW ENVIRONMENT IMPACT
- 2013 MALTA-SICILY PROJECT: HORIZONTAL DIRECTIONAL DRILLING AT SHORE APPROACHES ON MALTA SITE

## OUR PRIME CLIENTS

- PRYSMIAN
- ALCATEL / NEXANS
- BT MARINE
- CABLE DE LION
- GLOBAL MARINE
- SAIPEM
- AGIP
- ENEL
- FRANCE TELECOM
- ITALY TELECOM
- BK
- TRAVOCEAN
- SWISS TELECOM
- SWISS GAS
- SONSUB
- CABLES CORTAILLOD



**SISGEN** srl. - ITALY - via F. Petrarca n°2 Como, CAP: 22100

Office: +39 031 268531, fax: +39 031 264292, Workshop +39 031 555365, e-mail: sisgen@sis-gen.com